

Mamibot

Cordless Stick Vacuum Cleaner V8

User Manual



20201230 Ver.

Please read this manual carefully before use and keep this manual for future use.

Table of Contents

2-4	Important Safety Instructions and Warnings
5-7	Product Description
8-10	Assembling
10-13	Operation
14-15	Trouble Shooting
16	Name and Content of Hazardous Substances
17	Recycling of V8

Important Safety Instructions and Warnings

Read all documents before using

The appliance is not to be used by children. Persons with reduced physical, sensory or mental capabilities, or lack of experience and knowledge may only use this appliance if they are supervised or have been given instruction about how to use it safely and understand what risks are involved. Children should be supervised to ensure they do not play with the device.

Storage

- Please take it gently and carefully to avoid breaking the device.
- Please don't use it close to fire source or in any location of high temperature.
- Don't use or keep the cleaner in extreme climate conditions, e.g. cooling rooms, high temperature environment, suggested temperature of using and storage is 0-40°C of indoor areas;
- Please charge your cleaner at least every three months if you are not using it regularly.

Before Use

- Check the adapter cable and confirm it is in good condition.
- Fully charge the cleaner before using if it's not used for long time.
- Please make sure the Hepa filter and sponge filter are installed properly.

In Use

- Do not use outdoors or on wet surfaces.
- Do not allow to be used as a toy. Close attention is necessary when used by or near children.
- Use only as described in this manual. Use only manufacturer's recommended attachments.
- Do not use vacuum if it has been dropped, damaged, left outdoors, or dropped in water. Return it to an authorized service center.
- Do not handle plug or appliance with wet hands.
- Do not put any object into openings. Do not use with any opening blocked; keep free of dust, lint, hair and anything that may reduce air flow.
- Keep hair, loose clothing, fingers, and all parts of body away from openings and moving parts.

- Do not pick up anything that is burning or smoking, such as cigarettes, matches, or got ashes.
- Use extra care when cleaning on stairs.
- Do not use to pick up flammable or combustible liquids such as gasoline or use in areas where they may be present.
- Look on your vacuum and follow all label and marking instructions.
- Keep end of hose, wands and other openings away from your face and body.
- Do not use the vacuum cleaner without dust cup filter in place.
- Always unplug this appliance before connecting or disconnecting vacuum hose.
- Store the vacuum indoors. Put the vacuum away after us to prevent tripping accidents.
- Use the incorrect battery will damage motor and users. Please use the recommended batteries.
- Use only on dry, indoor surfaces.
- Do not use for any purpose other than described in this user's guide.
- If the supply cord is damaged, it must be replaced by the manufacturer, its service agent or similarly qualified persons in order to avoid a hazard.
- Don't use the cleaner in or near flammable or explosive conditions.
- Don't use your cleaner to suck glass particles, needle, dirty water, ashes, or any other liquid.
- Don't use your cleaner to suck cement, land plaster, wall plaster or toys, which may cause defects to the device.
- Don't block your suction inlet or tube, clear the suction inlet and tube in time to retain good performance of cleaning and avoid motor defects.
- If the cleaner can't start working even when the battery is full, please go to service agent or Mamibot distributors for inspection, don't disassemble it on your own.
- Don't use the cleaner if dust bin is not in position.

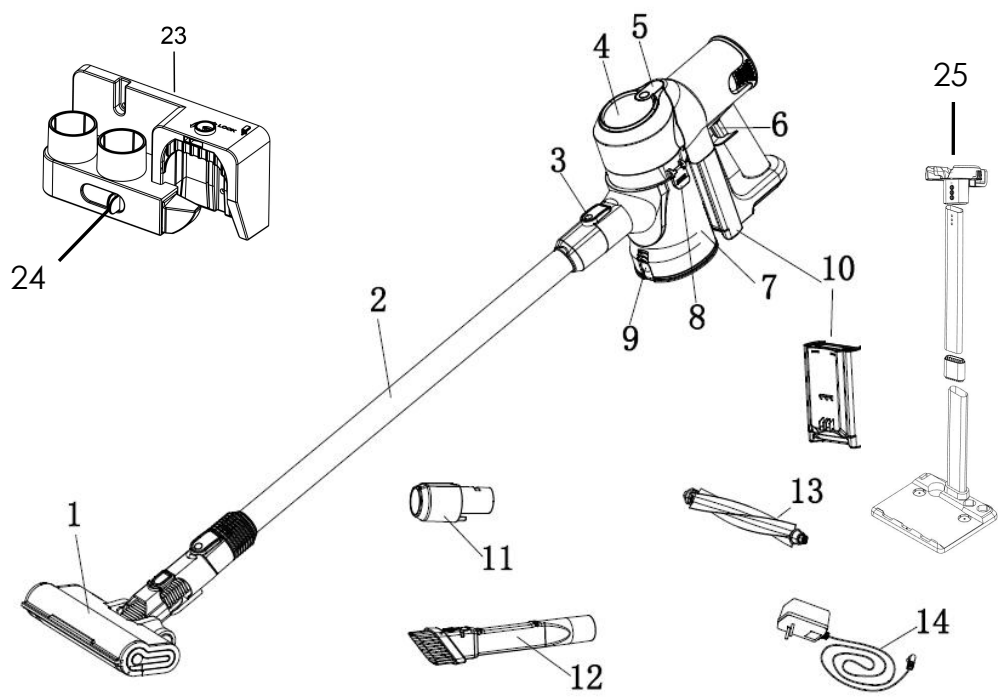
In Maintenance

- Dry cloth is suggested to clean the cleaner, no gas/alcohol or other chemical solution is allowed to clean the device.
- Turn off the cleaner first before proceeding with any cleaning task or maintenance.
- Please clean the dust box, suction inlet and tube in time to avoid air channel being blocked, air channel blockage would reduce suction power and cause motor heating.
- Hepa filter is suggested to be replaced in three month, or even in shorter period if the device is frequently used.

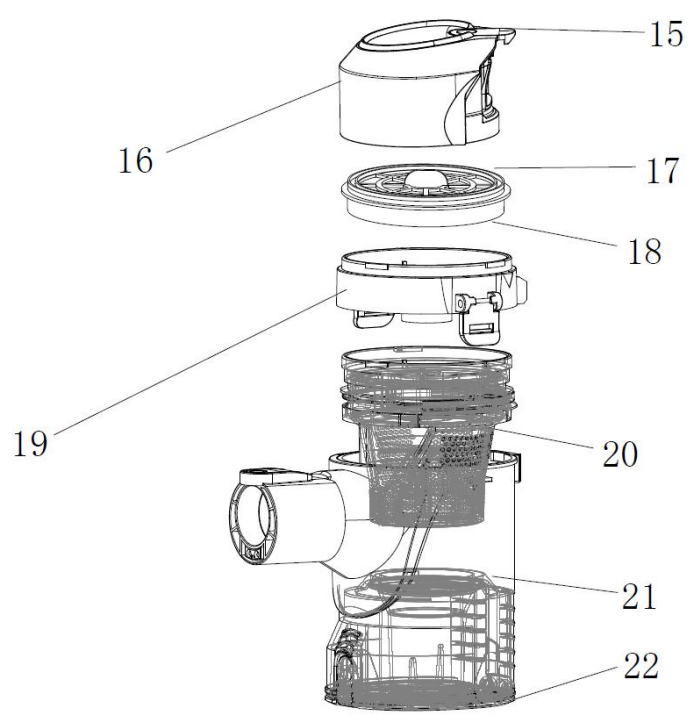
Application of Power Adapter and Batteries

- Use only the power adapter supplied with this device. Use of other type of power adapter will result in malfunction and/or danger.
- Please use the proper electric outlet and make sure no heavy objects are placed on the power adapter or power cord.
- Allow adequate ventilation around the adapter when using it to operate the device. Do not cover the power adapter with objects that will reduce cooling.
- Do not use the adapter in a high moisture environment. Never handle the adapter with wet hands.
- Connect the adapter to a proper power source. The voltage requirements are found on the adapter.
- Do not use broken adapter, power cord or plug. The plug must be removed from the receptacle before cleaning or maintaining the Appliance. Do not unplug the Power Adapter by pulling on the power cord.
- Do not attempt to service the adapter. There are no service parts inside. Replace the whole unit if it is damaged or exposed to high moisture. Consult your Mamibot dealer for help and maintenance.
- The battery used in this device may present a risk of fire or chemical burn if mistreated. Do not disassemble, short contact, heat above 60°C (140°F), or incinerate.
- If you have to dispose of this old equipment, please take it to the local recycling center for recycling electrical and electronic parts.
- Retain the safety and operating instructions for future reference.
- Do not expose your device to rain or excess humidity, and keep it away from liquids (such as beverages, faucets, and so on).
- Avoid exposing your device to direct sunlight or intense light source, and keep it away from heat source (such as radiators, space heaters, stoves, and so on).
- On waxed floors the movement of the cleaner head may create an uneven lustre. If this happens, wipe with a damp cloth, polish the area with wax, and wait for it to dry.
- The Appliance must be disconnected from the receptacle before removing the battery for disposal of the Appliance.
- The Appliance must be used in accordance with the directions in this Instruction Manual.
- Product manufacturer cannot be held liable or responsible for any damages or injuries caused by improper use.

1. Product Description



Main View



Dust Box View

1.1 Product diagram:

1	Main Brush Set	2	Aluminum Tube	3	Tube Release Button
4	Indicator Light	5	Body Release Button	6	Power Switch Button
7	Dust Box	8	Dust Box Upper Part Release Button	9	Dust Box Bottom Release Button
10	Battery Pack	11	Conversion Joint	12	Crevice Brush
13	Roller Brush (For hard floor or carpet)	14	Adapter	15	Body Release Button
16	Dust Box Cover	17	HEPA Filter	18	Sponge Filter
19	Dust Box Air Exhaust Cover	20	Centering Filter System	21	Dust Box
22	Dust Box Bottom	23/25	Cradle A Or B	24	Lock Button

1.2 Specification

Mamibot V8 Cordless Vacuum Cleaner			
Model No.:	V8	Rated Power:	350W
Rated Voltage:	22.2VDC	Battery Capacity:	2200mAh
Vacuum Power(kPa):	Standard: >9kPa Max:>27kPa	Dust Box(L):	0.5
Working Time:	Standard: 35-40mins Max:about 10mins	Charging Time:	About 5Hrs
Noise Level(dB):	<80	Dimension(mm): With Tube	1130x240x225
Adapter Output:	26VDC 0.45A		

The data come from the lab of Mamibot Manufacturing USA Inc. It might slightly be different with the users data due to different working environment and usage, please subject to the final products.

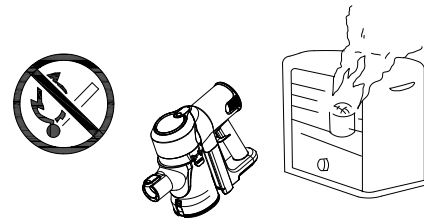
1.3 PRECAUTIONARY MEASURES

If just start to vacuum, the brush or extension tubes are blocked, you

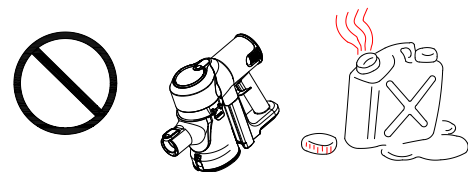
should switch off the vacuum cleaner at once. First clear the blocked substance before you attempt to start the vacuum cleaner again.

1.4 CAUTION:

Do not operate the vacuum cleaner too close to heaters and like radiators, cigarette butts etc.



Before using the vacuum cleaner, please remove large or sharp objects from the floor in order to avoid damaged filter. Do not use the vacuum to clean anything that is easy to burning, such as gas and cigarettes.



2. ASSEMBLING

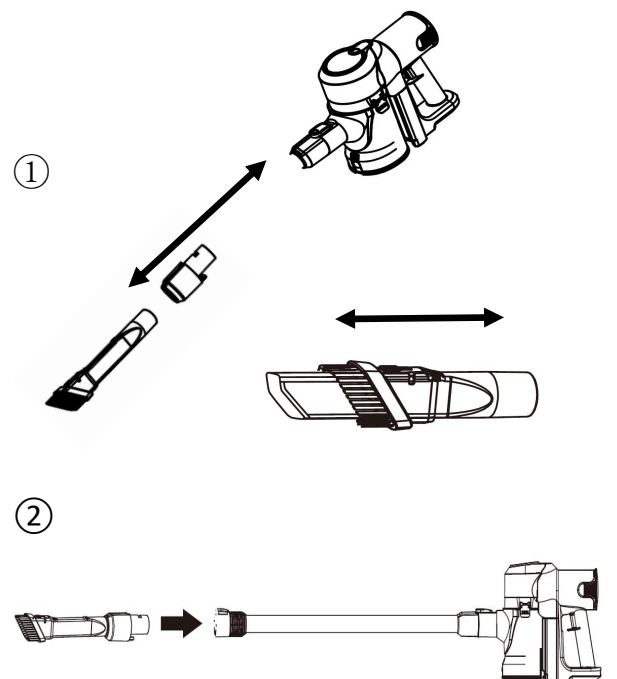
2.1 Connecting the Crevice

Brush

① When users are going to vacuum hard-to-reach areas like windowsill, sofa gaps, book shelves, inside closet or inside computer cases, crevice brush would be a better choice for cleaning.

Connecting the conversion joint first, then fix the crevice brush on the joint.

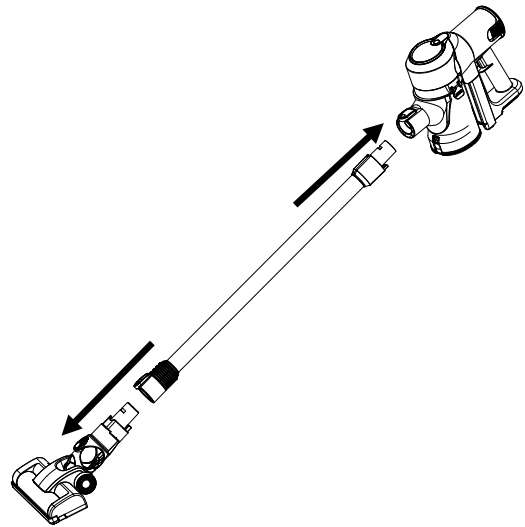
② When users are going to clean the higher places, such as ceiling, curtains, connecting the aluminum tube and the crevice brush to clean is practical and easy.



2.2 Connecting the Main Brush

With the main brush, users can set to clean hard floors like marble, wooden floors, tiles, short rugs.

- Connecting the aluminum tube with the cleaner head until we hear the voice of “click”.
- Connecting the aluminum tube with the main brush set until we hear the voice of “click”.



2.3 Remove or install the dust box

- **Remove dust box from the cleaner head:**

Push the body release button, then take out the dust box from body (Fig. A).

- **Install dust box on body:**

Put the handle on dust box hook (please pay attention to the fitting position and direction), then press them until we hear the voice of “click” (Fig.B).

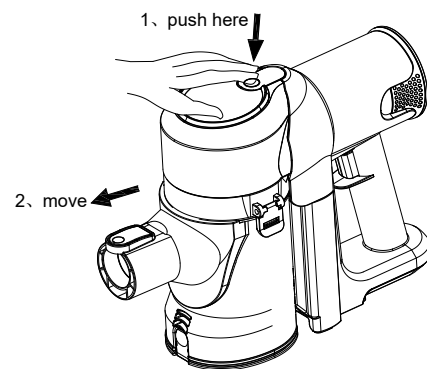


Fig.A

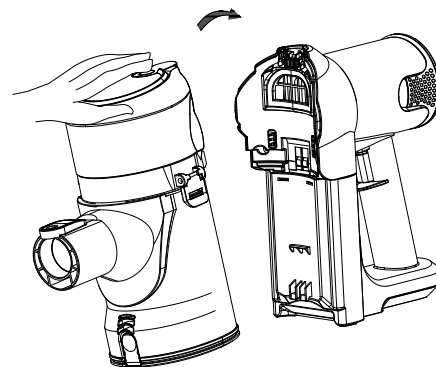


Fig.B

2.4 Install and remove the battery pack

(a) Remove the battery pack: Push the button at the bottom of the battery, and then pull the battery pack along the battery slot and remove it from the body (Fig. A).

(b) Install the battery pack: Place the battery pack on the battery slot and push it upward until we hear the voice of "crack" (Fig. B).

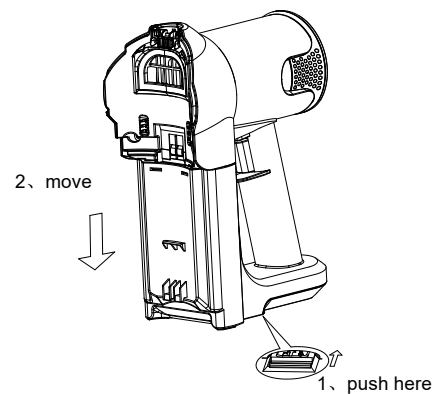


Fig.A

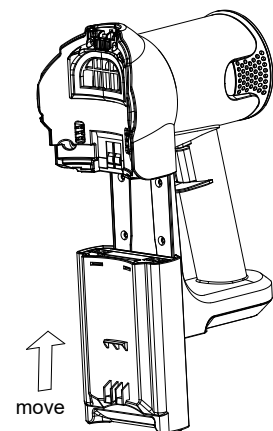
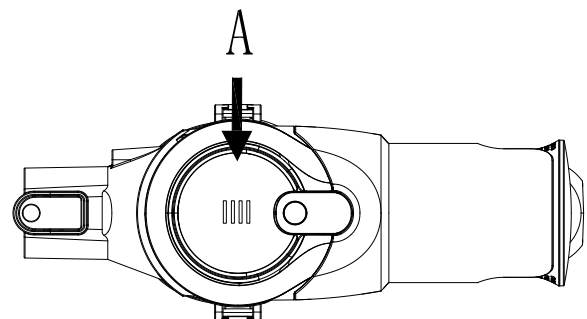


Fig.B

2.5 Charging Indicator

Charging Status: The indicators will flash blue color when charging, the four indicators will keep on after fully charged.

Working Status: The indicators will keep on when working, and the indicators will be off one by one with the consumption of battery power. When there is only one indicator on (the battery power is lower than 25%), the indicator will flash blue and alerts users to charge the cleaner.



Battery power is lower than 25%.



Battery power is 75%-100%.

3. Operation

3.1 Switch on/off

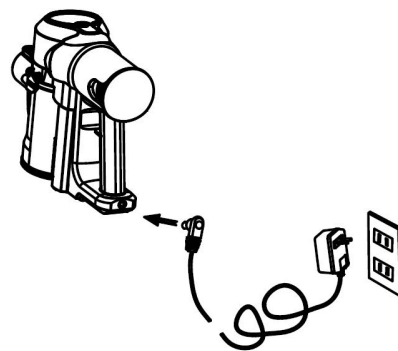
Press the power switch button once to switch on V8, and enter **Standard Mode**.

Press the power switch button again at Standard Mode, then enter **Max Mode**.

Press the power switch button again at Max Mode, the cleaner will be switched off.

3.2 Charging

Connecting the adapter with the power adapter and device, the battery indicators will flash blue from low to high. Battery is fully charged if all the indicator lights are illuminated without flashing.



3.3 Maintenance and Clean

3.3.1 Dust Box Cleaning

1). Remove the dust box from cleaner head.

2). Press the dust box bottom release button, then the dust will fall down automatically. usually you may only do like this to drop the dust (fig.A).

3). If the centering filter system is too dirty, please take out the dust box cover, the Hepa, the sponge filter and dust box air exhaust cover, then you can clean them with soft brush or wash them with water. You should dry them completely before use again(fig.B).

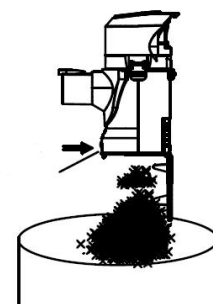


Fig.A

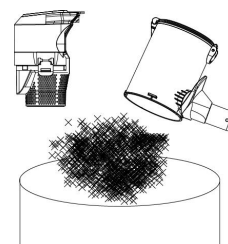
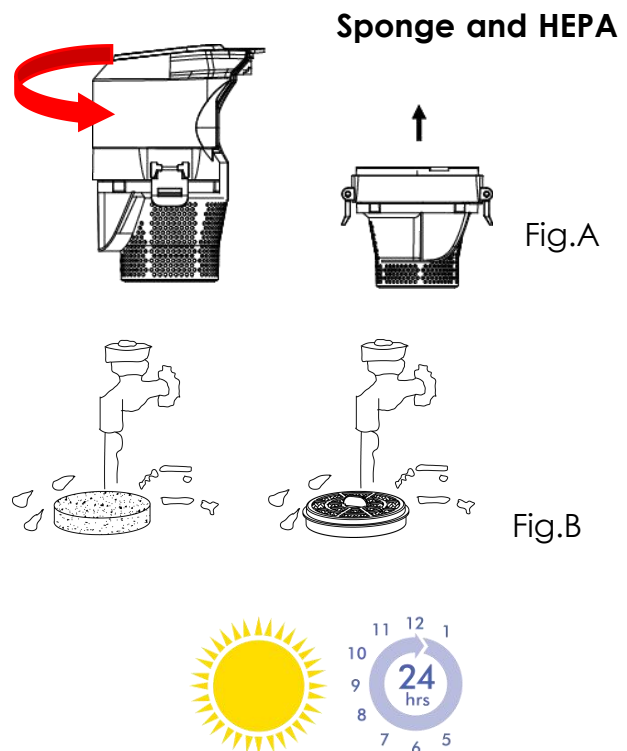


Fig.B

3.3.2 Hepa and Sponge Filter Cleaning

- 1). Remove the dust box from body.
- 2). Rotate the dust box cover anticlockwise from "close" to "open", take out the dust box cover, take out the sponge and HEPA filter set(fig. A).
- 3). Cleaning the Sponge and HEPA filter by soft brush or rinse it in warm water and dry them completely before use again. All the filters are washable (we recommend you to clean the filters when feeling the suction power becoming weak)(fig.B).

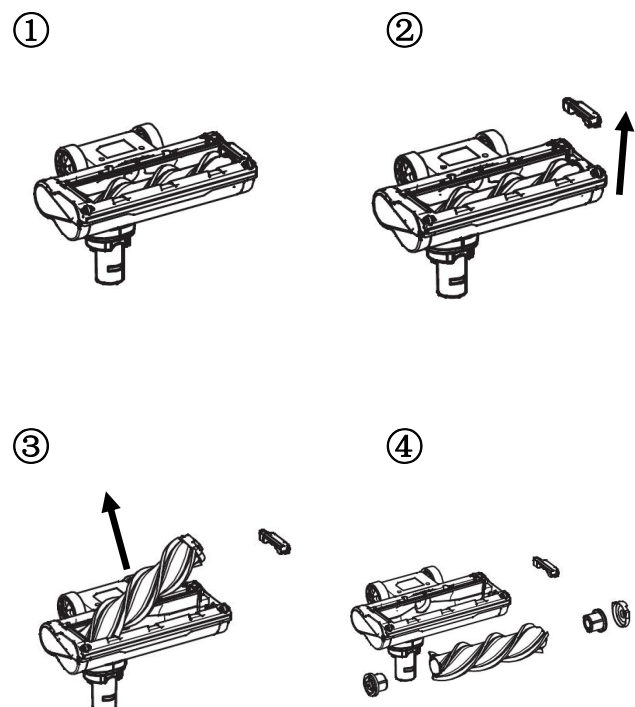
Note: The above filters should be equipped in correct places.



3.3.4 Roller Brush Cleaning

- 1). Pull the lock button on the brush set out, and take out the brush(the hard floor brush or the carpet brush), then get out the screws on the brush(see the steps in the figures on the right).
- 2). Clean dust, hair, fabric particles on the brush bar with your cleaning tool, cut hair with knife or scissor if the brush bar is tangled.
- 3). Dry the brush sets before the second use.

Users can replace the brush bar to clean the floor or clean the short rugs depends on actual situation.



3.4 Cradle Installation

There are two kinds of Crade installation: A OR B, please assemble the cradles according to the actual products in your hand.

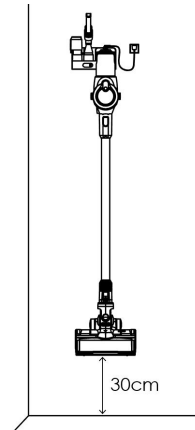
A: It is suggested that the height between the vacuum cleaner's brush set and the floor surface should be about 30cm. Please refer to the figure ①.

1). Fix the cradle on the wall with provided screws and expansion pipes ②.

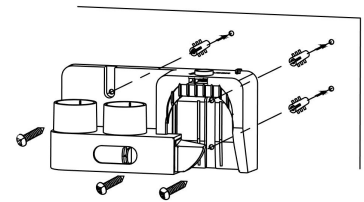
2). Hold the cleaner, and push the hand along the lock slot of cradle until we hear a “crack”

③ ④.

A. ①

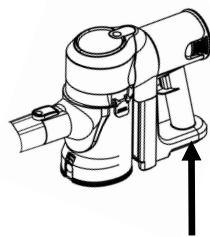


②

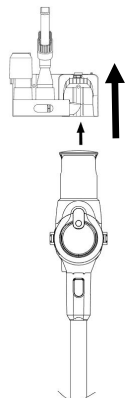


3). Plug in and charging ⑤.

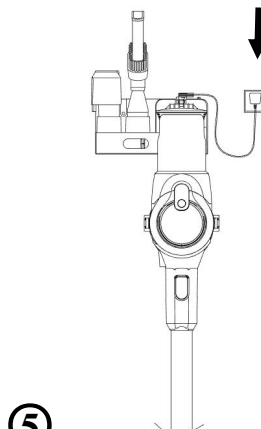
4). Plug out the adapter, pull the lock button toward the left with hand, then take off the cleaner ⑥.



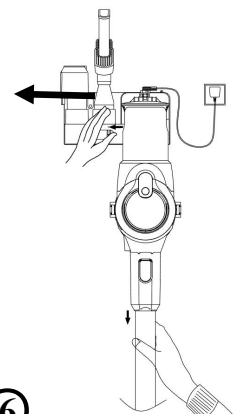
③



④



⑤

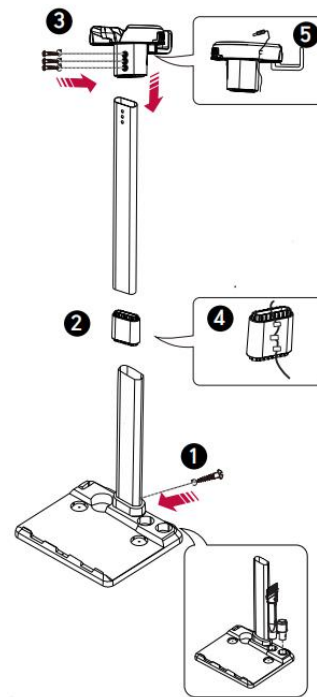


⑥

B:

- 1). Put the stand base on the flat floor steadily.
- 2). Fix the tube on the stand base by using the screw. Please refer to the figure ①;
- 3). Connecting the 2 aluminum tubes with the joint. Please refer to the figure ②;
- 4). Fix the tube on the stand head with 3 screws. Please refer to the figure ③.
- 5). Plug the adapter in and out. Please refer to the figure ⑤.

B.



4. TROUBLESHOOTING

If there is any failure of V8 cordless vacuum cleaner, please follow below solutions to check and solve the problems. If none of the solution is workable, please contact the authorized agent for inspection and further solutions.

PROBLEM	POSSIBLE REASON	POSSIBLE SOLUTION
Machine does not work.	The battery power is low.	Check the battery power and recharge it.
The machine can not suck ash or suction is very weak.	<ul style="list-style-type: none"> • The dust box may be full. • Lack of battery power. • The HEPA or sponge filters are blocked. • Non-dried filters after washing. • Air channel is blocked. 	<ul style="list-style-type: none"> • Empty dust box. • Charge the cleaner. • Clean the HEPA or sponge filter. • Dry the filters after washing. • Check the air channel and take out the blocked debris.
Dust escaping from vacuum.	<ul style="list-style-type: none"> • Dust box is full. • The HEPA or sponge files may not be installed. 	<ul style="list-style-type: none"> • Empty dust box. • Check to see if the HEPA or sponge filter are installed.
Failure of main brush.	The brush is tangled by cables, hair or other trashes.	Check and clean the brush.
Short running time.	<ul style="list-style-type: none"> • Aged battery pack. • Non-fully charged battery pack. • Over heated or over cooled battery pack. 	<ul style="list-style-type: none"> • Replace the battery pack • Recharge the battery pack • Cool down and restart

No LED indicator or flashing when charging.	Adapter is not plugged in properly.	Check the connection of the adapter, the power supply and the charging port, make sure they are in position.
Battery leakage.	Battery reaches life time or in no use for long time.	Replace the battery in time.

5. Name and Content of Hazardous Substances

Component	Content of Hazardous Substances						
	Plastic Shell	PCB	Cables	Metal Parts	Adapter	Electronic Components	Rubber Components
Cadmium(Cd)	○	○	○	○	○	○	○
Lead(Pb)	○	○	○	×	○	○	○
Mercury(Hg)	○	○	○	○	○	○	○
Hexavalent Chromium(CrVI)	○	○	○	○	○	○	○
Polybrominated Biphenyls(PBB)	○	○	○	○	○	○	○
Polybrominated Diphenyl Ethers(PBDE)	○	○	○	○	○	○	○
Bis(2-ethylhexyl) Phthalate(DEHP)	○	○	○	○	○	○	○
Butyl Benzyl Phthalate(BBP)	○	○	○	○	○	○	○
Dibutyl Phthalate(DBP)	○	○	○	○	○	○	○
Diisobutyl Phthalate(DIBP)	○	○	○	○	○	○	○

The time of the components for environment protection concern is 10 years. The time is valid under the use conditions of this manual.

O: It indicates that the content of the hazardous substances in all homogeneous materials of the components is in compliance with the council RoHS 2 Directive (EU) 2015/863 and (EU) 2017/2102 amending Annex II to Directive 2011/65/EU.

X: It indicates that the content of the hazardous substances in all homogeneous materials of the components is the exempt item according to the council RoHS 2 Directive (EU) 2015/863 and (EU) 2017/2102 amending Annex II to Directive 2011/65/EU.

6. Recycling of V8



The symbol on the product or on its packaging indicates that this product may not be treated as household waste. Instead it should be taken to the appropriate collection point for the recycling of electrical and electronic equipment. By ensuring this product is disposed of correctly, you will help prevent potential negative consequences for the environment and human health, which could otherwise be caused by in-appropriate waste handling of this product. For more detailed information about recycling of this product, please contact your local council, your household waste disposal service or the shop where you purchased the product.



The product meets the necessary requirements of the EU directives applicable to the specific product.

We reserve the right to changes in text, design and technical specifications which are subject to change without prior notice.

Mamibot Manufacturing (Shanghai) Co.,Ltd.

North 21th, No.1 Building, LN1040 Caoyang Rd, Shanghai, P.R.C.

Mamibot Manufacturing USA Inc.

Orange St. #600, Wilmington, New Castle, 19899, Delaware, USA

Tel: 001 302-428-9888 sales@mamibot.com www.mamibot.com

